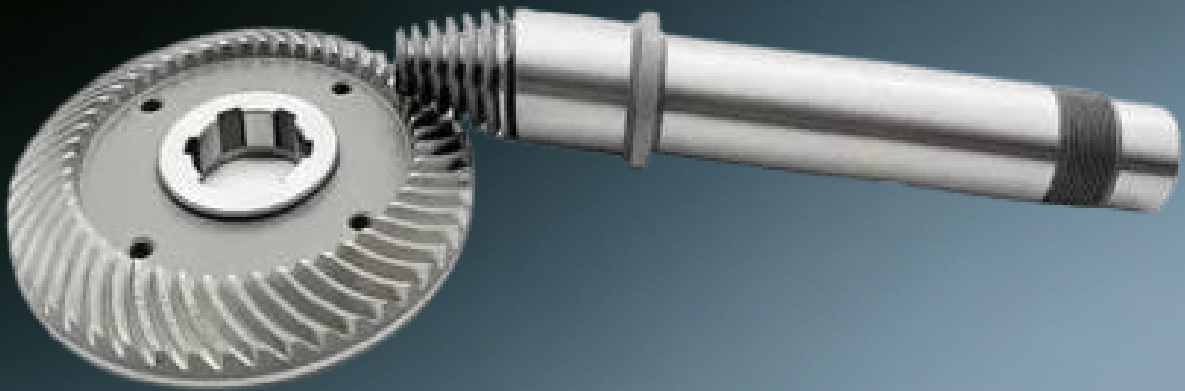


Precision Hypoid Gearset for Industrial Robot Reducers

Tight tooth control with optional grinding and full inspection documentation for repeatable accuracy.



ISO 1328 Grade 6-8
Hardness HRC 58-52



OEM / DFM
Support

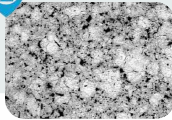
1



Superior Meshing Stability

Controlled lead and tooth profile for lower vibration, lower noise, and more stable meshing.

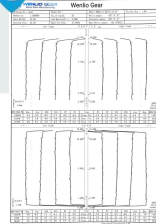
2



Enhanced Material Durability

Heat-treated steel options for higher wear resistance, fatigue strength, and service life.

3



Transparent Quality Traceability

Inspection reports support quality records and batch traceability.

Item	Specification	Typical	Notes
Module	1 - 4	1 - 3	As drawing
Pressure Angle	15 – 25°	20°	As drawing
Process	Forging / Broaching / Grinding / Hobbing / Shaping / Shaving / Milling	Grinding / Shaping	As drawing
Materials	20CrMnTi / 8620H / 20CrMo / 40Cr / 42CrMo / 45#steel / Others	20CrMnTi	As drawing
Heat Treatment	Carburized & Quenched / Q&T / Nitrided	Carburized	As drawing



Drawing Review:
Fast response & DFM feedback to evaluate manufacturability.



Process Recommendation:
Optimization of manufacturing routes based on requirements.



Prototype to Production:
From single sample to mass production lots, Meet the demands.



Final QC & Export:
Export-ready packaging and full QC documentation.

Ready to custom your tractor gear ?
Send your drawing a quick evaluation

Email: sales@wenlio.com
WhatsApp: +86 18257981010 Web: www.wenlio.com