

Miter Bevel Gear Set for Industrial Robot 1:1 Right-Angle Drives

A simple 90° 1:1 gear set for compact robot joints—share your torque, shaft size, and mounting distance for a quick quote.



ISO 1328 Grade 6-8
Hardness HRC 58-52



OEM / DFM Support

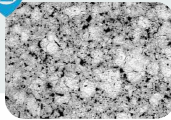
1



Superior Meshing Stability

Controlled lead and tooth profile for lower vibration, lower noise, and more stable meshing.

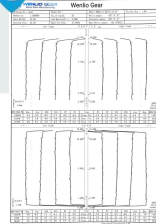
2



Enhanced Material Durability

Heat-treated steel options for higher wear resistance, fatigue strength, and service life.

3



Transparent Quality Traceability

Inspection reports support quality records and batch traceability.

Item	Specification	Typical	Notes
Module	0.5 - 2	1	As drawing
Pressure Angle	20°	20°	As drawing
Process	Milling / Forging / Powder Metallurgy	Milling / Forging	As drawing
Materials	20CrMnTi / 8620H / 20CrMo / 40Cr / 42CrMo / 45#steel / Others	20CrMnTi	As drawing
Heat Treatment	Carburized & Quenched / High-frequency Quenched / Nitrided	Carburized	As drawing



Drawing Review:
Fast response & DFM feedback to evaluate manufacturability.



Process Recommendation:
Optimization of manufacturing routes based on requirements.



Prototype to Production:
From single sample to mass production lots, Meet the demands.



Final QC & Export:
Export-ready packaging and full QC documentation.

Ready to custom your Power Tool gear ?
Send your drawing a quick evaluation

Email: sales@wenlio.com

WhatsApp: +86 18257981010

Web: www.wenlio.com